

# MAC-10D Diesel Transporter



- Four-wheel fully enclosed spring applied wet disc brakes.
- Soft Ride five point rubber mounted front suspension with Air-Ride.
- Hydrostatic transmission with 6000# planetary wheel units.
- MSHA approved Deutz 48 to 78 HP turbo engine.
- Fourteen passengers.
- Automatic parking brake.
- Low Speed: 11 1/2 MPH. (Std.)
- High Speed: 18 MPH. (78 hp only)
- Manual or Automatic/Manual Fire Suppression system.
- Engine in rear provides traction, ease of service, and places noise behind passengers.

**DAMASCUS**  
*Corporation*

*"We get around UNDER-*

Phone: 276-676-2376 or 800-390-7636

Mailing Address:

PO Box 610

Abingdon, VA 24212

<http://www.damascuscorp.com>

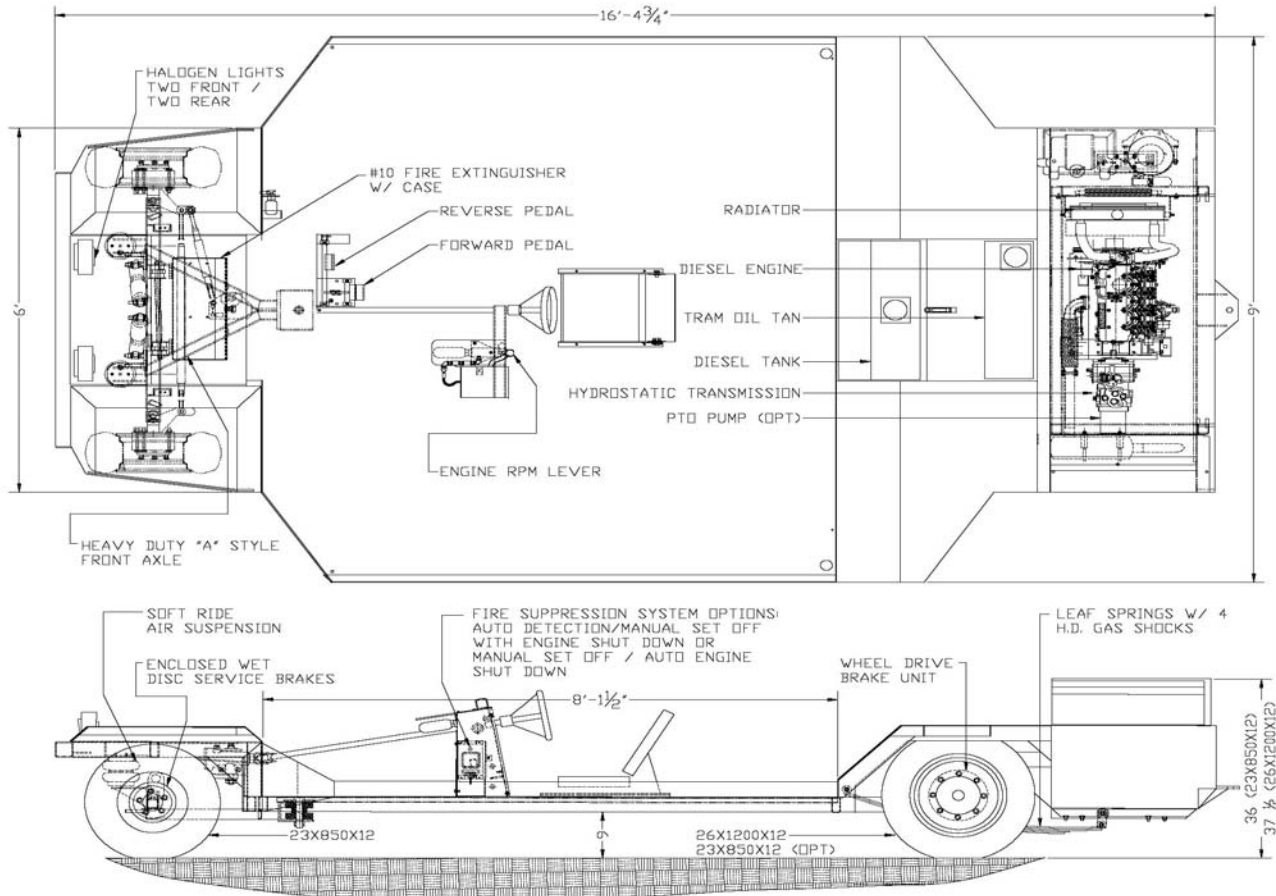
Fax: 276-676-0300

Shipping Address:

26864 Watauga Road

Abingdon, VA 24211

e-mail: [sales@damascuscorp.com](mailto:sales@damascuscorp.com)



## Specifications: MAC-10D Diesel Transporter

Dimensions:	Height: 37 ½" (41" Deutz) Width: 9'-0" Length: 16'-4 ¾"	Drive:	Hydrostatic, using dual wheel drive units with integral spring-applied brake mounted on support tube. Wheel unit capacity 14,000 lbs
	Turning Radius: 13'-6" I.S. Ground Clearance: 9" Standard	Suspension:	Front – Rubber mounted A frame style ax (le with new Soft Ride air suspension and heavy-duty gas shocks. Automotive type tie rods Rear – HD leaf springs with heavy duty gas shocks and rubber overload bumpers
Weight:	4850#	Fire Suppression:	Standard - Ansul manual actuated with engine shutoff. Optional – Ansul automatic/manual actuated with engine shutoff "Check Fire System"
Payload:	3000#, 14 Men	Fire Extinguisher:	#10 fire extinguisher, bracket and guard
Performance:	Speed 11.5 mph std. 18 mph (78 hp 2-speed opt). Grad ability at maximum speed 15%, maximum operating grade 18%	Tires:	Front: 23 x 850 x 12 - 6 ply Rear: 26 x 12 x 12 - 8 Ply Rating (std.). 10-16.5 (78 hp 2-speed opt)
Engine:	Deutz F4L2011F, 4 cylinder, 65 HP . These engines meet MSHA requirements for use in underground mining under Part 7, Title 30 CFR. Out by use only	Capacities:	Diesel fuel – 12.25 gallons. Hydraulic oil – 12.6 gallons
Electrical:	12 Volt	Options:	Hydraulic power take-off (PTO), Canopy, Seating, and Tires. Contact Mfg. for more...
Headlights:	Two front, two rear, halogen, 12volt		
Brakes:	Four-wheel wet disc brakes, spring applied, pressure release w/ automatic parking brake feature, Rear hydrostatic holdback.		