

MAC-8D Diesel Transporter



Four Wheel
Wet Disc Brakes!



Soft Ride
Suspension!



- Four-wheel fully enclosed spring applied wet disc brakes.
- Soft Ride five point rubber mounted front suspension with Air-Ride.
- Hydrostatic transmission with 6000# planetary wheel units
- MSHA approved Deutz engine 44 HP.
- Twelve passenger capacity.
- Automatic parking brake.
- Speed: 11 1/2 MPH. Grade Ability at Max speed 15%.
- Manual or Automatic/Manual Fire Suppression system.
- Engine in rear provides traction and ease of service.

DAMASCUS
Corporation

"We get around UNDERGROUND!!"

Phone: 276-676-2376 or 800-390-7636

Mailing Address:

PO Box 610

Abingdon, VA 24212

<http://www.damascuscorp.com>

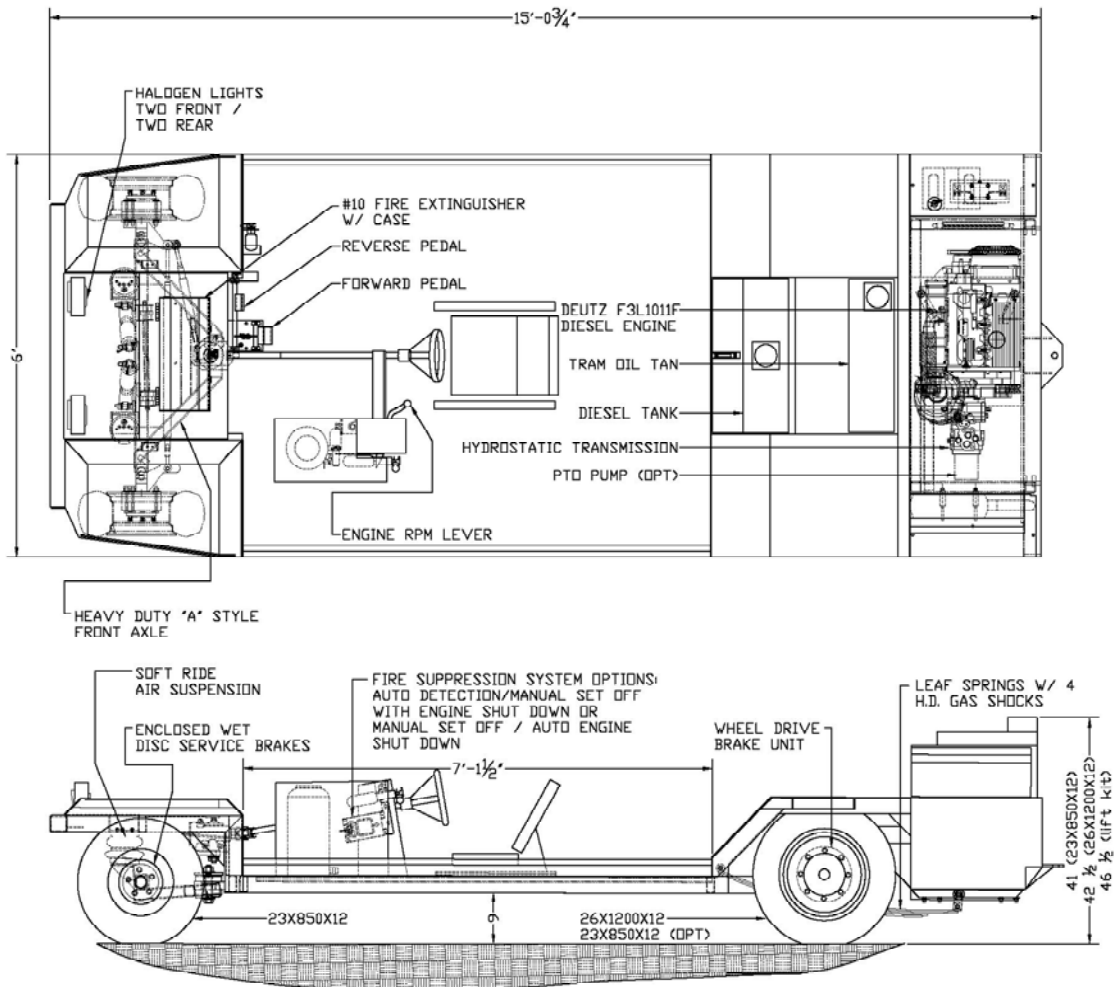
Fax: 276-676-0300

Shipping Address:

26864 Watauga Road

Abingdon, VA 24211

e-mail: damascus@naxs.com



Specifications: MAC-8D Diesel Transporter

Dimensions:	Height: Varies (see dwg) Width: 6'-0" Length: 15'-0 ³ / ₄ " Turning Radius: 12'-6" I.S. Ground Clearance: 9" Standard, 14 1/2" (Lift Kit)	Drive:	Hydrostatic, using dual wheel drive units mounted on support tube with planetary gearing, integral spring-applied brake, Wheel unit capacity 6000 lbs
Weight:	2850#	Suspension:	Front - Rubber mounted A frame style axle with new Soft Ride air suspension and heavy-duty gas shocks. Automotive type tie rods Rear - HD leaf springs with heavy duty gas shocks and rubber overload bumpers
Payload:	3000#, 12 Men	Performance:	Speed 11.5 max., gradability at maximum speed 15%, maximum operating grade 18%
Engine:	Deutz F3L2011F, 3 cylinder, 48 HP at 3000 rpm, air cooled, heavy duty industrial design, approved by MSHA for use in underground mining under Part 7, Title 30 CFR. Outby use only	Fire Suppression:	Standard - Ansul manual actuated with engine shutoff. Optional - Ansul automatic/manual actuated with engine shutoff "Check Fire System"
Electrical:	12 Volt	Fire Extinguisher:	#10 fire extinguisher, bracket and guard
Headlights:	Two front, two rear, halogen, 12volt	Tires:	Front: 23 x 850 x 12 - 6 ply Rear: 26 x 12 x 12 - 8 Ply Rating (std.).
Brakes:	Four-wheel wet disc brakes, spring applied, pressure release w/ automatic parking brake feature, Rear hydrostatic holdback.	Capacities:	Diesel fuel - 12.25 gallons. Hydraulic oil - 12.6 gallons
		Options:	Hydraulic power take-off (PTO), Canopy, Seating, and Tires. Contact Mfg. for more...